

Dermoscopy of a Corneiform Pyogenic Granuloma

Cheymae Saadani Hassani*, S Elloudi, H Baybay and FZ Mernissi

Department of Dermatology, CHU Hassan II, Fez, Morocco

Article Info

*Corresponding author:

Cheymae Saadani Hassani

Department of Dermatology

CHU Hassan II, Fez

Morocco

E-mail: ch.saadani@gmail.com

Received: May 29, 2018

Accepted: June 28, 2018

Published: July 4, 2018

Citation: Hassani CS, Elloudi S, Baybay H, Mernissi FZ. Dermoscopy of a Corneiform Pyogenic Granuloma. *Madridge J Dermatol Res.* 2018; 3(1): 50-51.

doi: 10.18689/mjdr-1000111

Copyright: © 2018 The Author(s). This work is licensed under a Creative Commons Attribution 4.0 International License, which permits unrestricted use, distribution, and reproduction in any medium, provided the original work is properly cited.

Published by Madridge Publishers

A 30-year-old female presented with 4 months history after a trauma, of an erythematous, soft crusted and painful nodule over the chin (Figure 1).



Figure 1. Erythematous soft crusted nodule over the chin.

Dermoscopy was performed and revealed homogenous reddish area with white rail lines, an irregular linear vascularization at the basis, and white crusts with collarette at the upper (Figure 2),

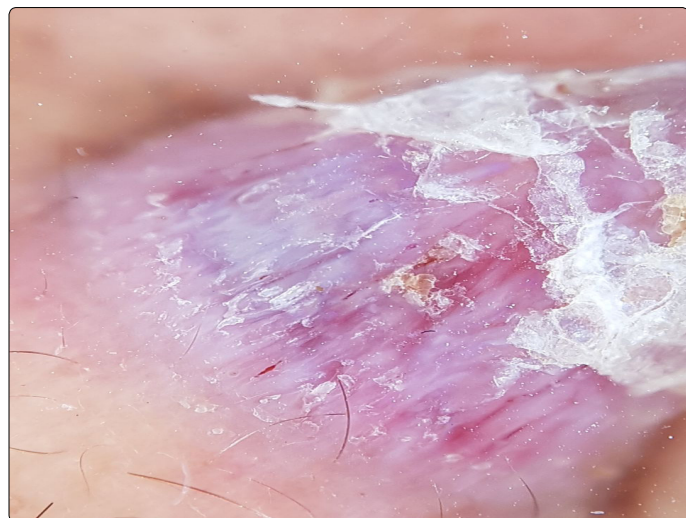


Figure 2. Dermoscopy revealed homogenous reddish area with white rail lines, surrounded by white collarette, with irregular linear vascularization on the basis.

Suggestive of pyogenic granuloma. Histopathology confirms the diagnosis revealing lobular capillary proliferation in upper dermis.

Pyogenic granuloma is dermoscopically characterized by reddish homogeneous area which is corresponded to the histologic finding of proliferating capillaries and veins [1]. The white lines like a double rail correspond to the histologic finding of fibrous septa that surround the lobules [2]. And finally, a white collarette corresponds to the hyperplastic adnexal epithelium that embraces the lesion at the periphery [1].

The identification of vascular structures in pyogenic granuloma is crucial because the presence of vascular structures in a red tumor resembling a pyogenic granuloma indicates that a melanoma should not be ruled out [3], such as in our case.

Conflict of Interest

The authors have no conflicts of interest to disclose.

References

1. Abhijeet KJ, Sonthalia S, Khopkar U. Dermoscopy of Pyogenic Granuloma. *Indian Dermatol Online J.* 2017; 8(6): 523-524.
2. Kissou A, Hassam BE. Dermoscopy of pyogenic granuloma. *Pan Afr Med J.* 2017; 27: 110. doi: 10.11604/pamj.2017.27.110.12278
3. Oiso N, Kawada A. Dermoscopy of pyogenic granuloma on the lip: the differing appearances of vascular structures with and without pressure. *Eur J Dermatol.* 2011; 21(3): 441. doi: 10.1684/ejd.2011.1338