

Case Report

Open Access

Atypical Case of Hypertrophic Lichen Planus recognized by Dermoscopy

Safae Zinoune^{1*}, Hanane Baybay¹, Nawal Hammas², Mohammed Chaouche¹, I Gouzi², Sara Elloudi¹ and Fatima Zahra Mernissi¹

¹Department of Dermatology, Hassan II University Hospital, Fez, Morocco

²Department of Anatomic Pathology, Hassan II University Hospital, Fez, Morocco

Article Info

***Corresponding author:**

Safae Zinoune

Department of Dermatology
University Hospital Hassan II
Fez

Morocco

Tel: 00212602841831

E-mail: dr.zinounesafae@gmail.com

Received: March 5, 2019

Accepted: March 26, 2019

Published: April 5, 2019

Citation: Zinoune S, Baybay H, Hammas N, et al. Atypical Case of Hypertrophic Lichen Planus recognized by Dermoscopy. *Madridge J Dermatol Res.* 2019; 4(1): 90-93. doi: 10.18689/mjdr-1000123

Copyright: © 2019 The Author(s). This work is licensed under a Creative Commons Attribution 4.0 International License, which permits unrestricted use, distribution, and reproduction in any medium, provided the original work is properly cited.

Published by Madridge Publishers

Abstract

We present an atypical case of hypertrophic lichen planus (HLP) in a middle-aged patient. The presentation as a solitary, indolent, pigmented lesion in a photo-exposed area required further investigations to rule out malignancy, especially pigmented Bowen disease and pigmented basocellular carcinoma. Dermoscopy findings were found to be helpful in our case in addressing the correct diagnosis.

Keywords: Hypertrophic lichen planus; Dermoscopy; Histology.

Introduction

Lichen planus (LP) is an inflammatory disease that affects the skin, the mucous membranes, the genitalia, the nails, and the scalp. There are several variants of lichen planus whose clinical, dermoscopic and histological appearance varies from one subtype to another. Hypertrophic lichen planus (HLP) is the second most common cutaneous variant of lichen planus. It is typically characterized as extremely pruritic, thick, and hyperkeratotic plaques, they are seen primarily on the shins or dorsal aspect of the foot and may be covered by a fine adherent scale. The lesions are usually symmetrical and tend to be chronic because of repetitive scratching [1,2]. The diagnosis of HLP is usually established clinically, based on the typical morphology of lesions and the coexisting of intense pruritus. However, atypical presentations requiring histopathologic confirmation of the diagnosis do exist [3].

Dermoscopy is a fast and non-invasive technique, increasingly applied in the diagnosis of a broad range of inflammatory skin diseases including HLP. This tool may have a significant interest in the atypical forms of this chronic condition, especially for solitary lesion [4].

In this report, we present a characteristic example of a patient with a misleading clinical aspect of HLP resembling maligned pathology. Application of dermoscopy was the key point in the diagnosis.

Clinical Presentation

A 50-year-old man was referred to our department for a solitary pigmented lesion of the neck of five years duration (Figures 1 and 2). Because of the slow growth of the lesion, the site involved and the age of the patient, a medical consult was requested to rule out malignancy. No relevant medical history was recorded.



Figure 1. Solitary pigmented plaque of the neck.



Figure 2. Solitary pigmented plaque of the neck.

Dermoscopic examination revealed the predominance of a Brownish color on the background, with prominent pearly whitish structures, arranged in a reticulated pattern with peripheral striations and some comedo-like openings (Figure 3). At the periphery, areas of peppering were present.



Figure 3: Pearly whitish structures arranged in a reticulated pattern with peripheral striations (stars) and comedo-like openings (arrows) on a brownish background.

The diagnosis of hypertrophic lichen planus (HLP) was considered after clinical and dermoscopic correlation. A biopsy was then performed.

The histopathologic examination found a marked orthokeratotic hyperkeratosis, irregular acanthosis, focal hypergranulosis with follicular dilatation and plugging, and a superficial dense bandlike infiltrate (Figure 4). All findings were in keeping with the final diagnosis of hypertrophic lichen planus.

The patient was treated with topical corticosteroids class I with good improvement.

Discussion

Dermoscopy is a non-invasive diagnostic procedure that allows a rapid *in vivo* evaluation of morphologic structures of the epidermis, the dermo-epidermal junction, and the papillary dermis, not visible to the naked eye. Given that dermoscopic structures have been assessed to correlate well with the underlying histopathologic alterations, the method can be regarded as a link between clinical and histopathologic examination [3]. This diagnostic tool has allowed the identifications of several skin diseases, both neoplastic and non-neoplastic [5,6]. Regarding inflammatory conditions in dermatology, specific dermoscopic patterns have been well defined for a non-invasive diagnosis [6]. These peculiar clues are somehow easy to identify when the history, distribution, and morphology of lesions are evocative for a specific disease. However, things are less straightforward when we face unusual clinical scenarios [7].

In the current case, clinical manifestations as a solitary pigmented lesion, the slow growth of the lesion, the site involved and the age of the patient, were highly suggestive of pigmented basocellular carcinoma (BCC) and pigmented

Bowen's disease included in the differential diagnosis. However, the application of dermoscopy significantly influenced our diagnostic thoughts. On one hand, this was because the lesion deviated from the standard dermoscopic pattern of pigmented BCC, which are composed of arborizing vessels, superficial fine telangiectasias, blue-grey ovoid nests, blue-grey globules, In-focus dots, maple leaf-like areas, spoke-wheel areas, concentric structures, ulceration, multiple small erosions, shiny white-red structureless areas, and white streaks [8]. On the other hand the usual dermoscopic pattern of pigmented Bowen's disease is characterized by glomerular vessels that are arranged in clusters, white to yellow scales and brown dots with a linear arrangement that usually seen at the periphery of the lesion [9]. These features are not found in our case either. The prevailing dermoscopic features were the pearly white crossing lines, corresponding to the so-called Wickham striae, which are known as a highly specific criterion of Lichen Planus [10]. The presence of yellowish round structures (comedo-like opening), the brownish background, the very itchy character as well as the clinical aspect of the lesion, makes the diagnosis of HLP.

Typical dermoscopy of HLP show pearly white lines, Comedo-like openings (CLO), Gray-blue globules and Red dots wick arranged diffusely in the lesions [11]. Each of these dermoscopic signs has a histological correspondence. Pearly white areas (Wickham striae) correspond histopathologically to compact orthokeratosis above zones of wedge-shaped hypergranulosis and acanthosis. CLO correspond to dilatation, plugging and hypergranulosis of the infundibulum and they are suggestive of transepithelial elimination. In HLP, histopathologic changes, namely, epidermal hyperplasia, acanthosis, hypergranulosis, and compact and lamellated hyperkeratosis, are centered on follicular infundibula and acrosyringia [12]. Hence, CLO are very specific to hypertrophic LP, they are also demonstrated in the early stages of lichen sclerosis and in basal cell carcinoma and seborrheic keratosis [13,14]. Gray-blue globules represent melanin pigment in the dermis due to melanin incontinence as a result of vacuolar degeneration in perifollicular and interfollicular areas. Red dots correspond to dilated capillaries in histopathology [14]. The presence of all of these features in dermoscopy establishes a certain diagnosis of HLP.

As shown in our case, dermoscopy may change our diagnostic thoughts, saving us from misdiagnosis and potential inappropriate management.

Conclusion

Dermoscopy is a fast and noninvasive technique that contributes to the early recognition and treatment of HLP, which is important considering the possible development of squamous cell carcinoma in longstanding nontreated lesions, hence, its possible role also in the monitoring of these patients [15].

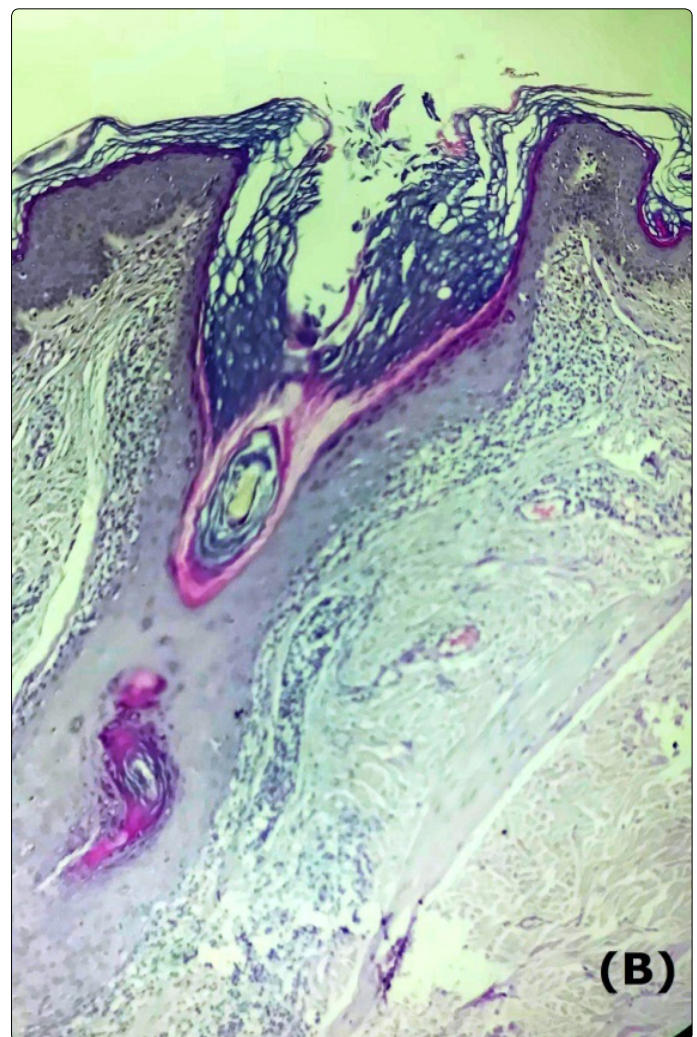
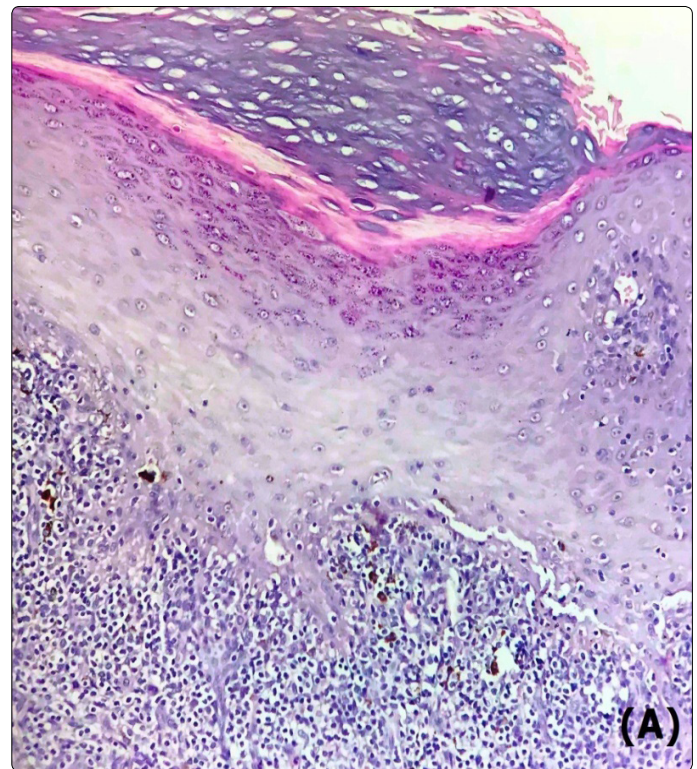


Figure 4(A): Histopathology revealed irregular acanthosis, compact orthokeratotic hyperkeratosis, focal hypergranulosis, and a superficial dense bandlike infiltrate (HES \times 200). (B). Plugging of dilated follicles (HES \times 200).

References

1. Shiohara T, Kano Y. Lichen planus and lichenoid dermatoses. In: Bologna JL, Jorizzo JL, Schaffer JV (eds). *Dermatology*. 3rd edition. New York: Elsevier Saunders. 2012: 183-202. doi: 10.5826/dpc.0602a03.
2. Doshi B, Khopkar U. Histopathology of lichen planus and its variants. In: Khopkar U, Valia A (eds). *Lichen Planus*. New Delhi: Jaypee Brothers Medical Publisher (P) LTD. 2013: 123-147.
3. Russo T, Piccolo V, Lallas A, Argenziano G. Recent advances in dermoscopy. *F1000Res*. 2016; 5. doi: 10.12688/f1000research.7597.1
4. Lallas A, Zalaudek I, Argenziano G, et al. Dermoscopy in general Dermatology. *Dermatol Clin*. 2013; 31(4): 679-694. doi: 10.1016/j.det.2013.06.008.
5. Borsari S, Pampena R, Lallas A, et al. Clinical indications for use of reflectance confocal microscopy for skin cancer diagnosis. *JAMA Dermatol*. 2016; 152(10): 1093-1098. doi: 10.1001/jamadermatol.2016.1188.
6. Lallas A, Kyrgidis A, Tzellos TG, et al. Accuracy of dermoscopic criteria for the diagnosis of psoriasis, dermatitis, lichen planus and pityriasis rosea. *Br J Dermatol*. 2012; 166(6): 1198-1205. doi: 10.1111/j.1365-2133.2012.10868.x.
7. Papageorgiou C, Apalla Z, Lazaridou E, et al. Atypical case of lichen planus recognized by dermoscopy. *Dermatol Pract Concept*. 2016; 6(4): 39-42. doi: 10.5826/dpc.0604a09
8. Wozniak-Rito A, Zalaudek I, Rudnicka L. Dermoscopy of basal cell carcinoma. *Clin Exp Dermatol*. 2018; 43(3): 241-247. doi:10.1111/ced.13387.
9. Zhou LL, Mistry N. Pigmented Bowen disease. *CMAJ*. 2017; 189(47): E1462. doi: 10.1503/cmaj.170810.
10. Friedman P, Sabban EC, Marcucci C, Peralta R, Cabo H. Dermoscopic findings in different clinical variants of lichen planus. Is dermoscopy useful? *Dermatol Pract Concept*. 2015; 5(4): 51-55. doi: 10.5826/dpc.0504a13
11. Ankad BS, Beergouder SL. Hypertrophic lichen planus versus prurigo nodularis: a dermoscopic perspective. *Dermatol Pract Concept*. 2016; 6(2): 9-15. doi: 10.5826/dpc.0602a03.
12. Busam KJ. *Dermatopathology: Foundations in Diagnostic Pathology*. Philadelphia: Saunders Elsevier Health Sciences. 2010: 11-81.
13. Shim WH, Jwa SW, Song M, et al. Diagnostic usefulness of dermoscopy in differentiating lichen sclerosus et atrophicus from morphea. *J Am Acad Dermatol*. 2012; 66(4): 690-691. doi: 10.1016/j.jaad.2011.06.042
14. Braun RP, Rabinovitz HS, Krischer J, et al. Dermoscopy of pigmented seborrheic keratosis: a morphological study. *Arch Dermatol*. 2002; 138(12): 1556-1560. doi: 10.1001/archderm.138.12.1556
15. Singh SK, Saikia UN, Ajith C, Kumar B. Squamous cell carcinoma arising from hypertrophic lichen planus. *J Eur Acad Dermatol Venereol*. 2006; 20(6): 745-746. doi: 10.1111/j.1468-3083.2006.01500.x